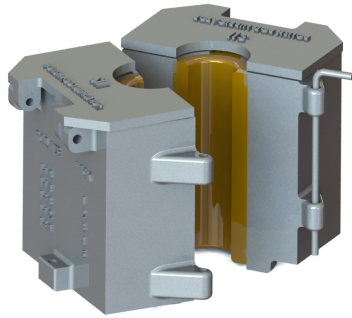


Rod Lubricator with Wicks



The Polished Rod Lubricator is easily installed and can be used with any style of stuffing box. Lubrication extends stuffing box packing life and the lubricator uses replaceable felt wicks. Available for all polished rod sizes.

Design Features

- Provides convenient polished rod lubrication
- Easy installation. Use with any style of stuffing box.
- Lubrication extends stuffing box packing life
- Uses replaceable felt wicks
- Available for all polished rod sizes
- 5 ½ inch height
- Single completion

Benefits

- Applies when the unit first begins pumping

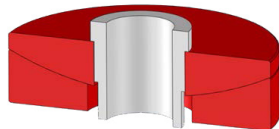
Advantages

- Designed to prevent premature packing failure due to lack of lubrication on the polished rod

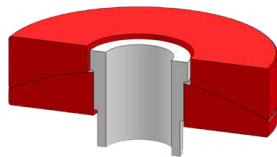
Sizes

1 ½ in 1 ¼ in 1 ⅜ in 1 ½ in 1 ¾ in

Leveling Plates



When used WITH a rod rotator



When used WITHOUT a rod rotator

The use of Leveling Plates can help compensate for misalignment of the carrier bar of up to 2 degrees in any direction.

Design Features

- Can be installed under the rod rotator or under the polished rod clamp if rod rotators are not used
- Available in all polished rod sizes

Benefits

- Designed to help minimize polished rod breaks

Advantages

- Designed to ensure uniform engagement between the polished rod clamp and the carrier bar

Sizes

1 ½ in 1 ¼ in 1 ⅜ in 1 ½ in 1 ¾ in

W-164/164SG, W-252, W-302/302SG, W-303/303SG, W-304/304SG



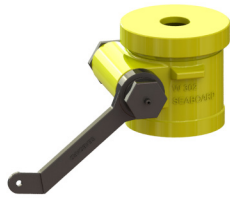
W-164/164SG



W-252



W-302/303



W-302SG/303SG



W-304/304SG

Rod rotation is one of the most effective means of reducing rod coupling and tubing wear, especially when used in conjunction with rod guides. Rod Rotators are available in maximum recommended loads ranging from 13,000–50,000 pounds.

Series	W-164/164SG	W-252	W-302/302SG	W-303/303SG	W-304/304SG
Maximum recommended load	13,000 lb	33,000 lb	40,000 lb	40,000 lb	50,000 lb
Required bridal clearance width	4 in	6 in	7 in	7 in	7 in
Polished rod sizes	1 1/8 – 1 1/4 in	1 1/8 – 1 1/2 in	1 1/8 – 1 3/4 in	1 1/8 – 1 3/4 in	1 1/8 – 1 3/4 in
Height	4 1/2 in	5 1/2 in	6 1/2 in	6 1/2 in	6 1/2 in
Weight	18 lb	35 lb	47 lb	47 lb	47 lb
Standard actuator cable length	16 ft	16 ft	25 ft	25 ft	25 ft
90° Lever pull per revolution	24/43	28	77/154	77/154	77/154

Design Features

- Slow gear allows rod gear torque to easily disperse downhole
- Ductile body material
- Helical gear rotation
- Polished rod sizes 1 1/8 to 1 3/4 inches

Patent Pending—New and improved ratchet pawl design on the W-164, W-164SG, W-302 and W-302SG

Friction-type Clamp



W-25 Series



W-40 Series

Series	W-25	W-40
Rated load	25,000 lb	40,000 lb
Polished rod size	1 1/8 in, 1 1/4 in, 1 1/2 in	1 1/8 in, 1 1/4 in, 1 1/2 in, 1 3/4 in
Recommended min/max bolt torque	250/300 ft-lbf	500/550 ft-lbf
Weight	10.5 lb	25 lb
Height	4 1/8 in	6 3/4 in

Design Features

- Available in standard rod sizes
- Phosphate coated
- Steel forged steel body
- 9 inch rotating diameter

Indention-type Clamp



W-10S Series



W-10D Series



W-10T Series

Series	W-10S 1 bolt	W-10D 2 bolt	W-10T 3 bolt
Rated load	13,000 lb	26,000 lb	40,000 lb
Polished rod size	1 in, 1 1/8 in, 1 1/4 in, 1 5/16 in, 1 1/2 in	1 in, 1 1/8 in, 1 1/4 in, 1 5/16 in, 1 1/2 in	1 in, 1 1/8 in, 1 1/4 in, 1 5/16 in, 1 1/2 in
Recommended min/max bolt torque	225/250 ft-lbf	225/250 ft-lbf	225/250 ft-lbf
Weight	3.75 lb	7.5 lb	11.25 lb
Height	2 1/2 in	5 in	7 1/2 in

Design Features

- Individually hinged
- Available in standard rod sizes
- Phosphate coated
- Forged steel body
- Rotating diameter 5 3/4 inch

Benefits

Reduced size with no decrease in weight load capacity

Advantages

- Can be individually torqued
- Light weight compact design