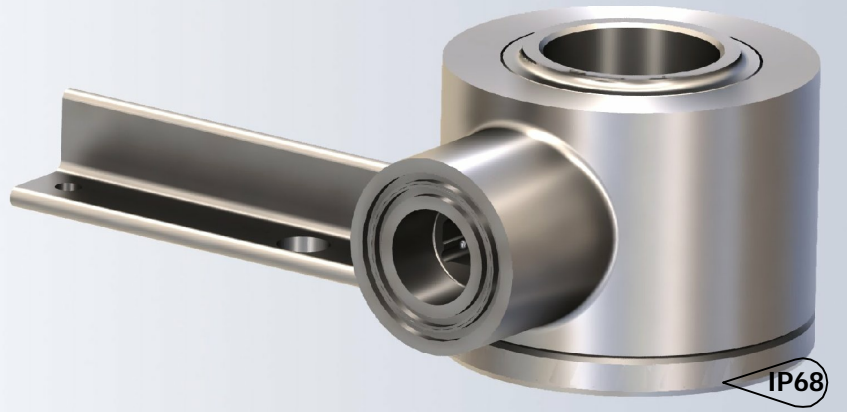


specialty sensors
SUCKER ROD LOAD CELL -SSRLC
8027

The type SSRLC is a stainless steel compression type load cell with complete hermetic sealing. It is a perfect fit for pump off control systems.



FEATURES

- Capacity of 30klb, 50klb.
- Stainless steel construction.
- Environmental Protection IP68 with complete hermetic sealing.

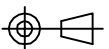
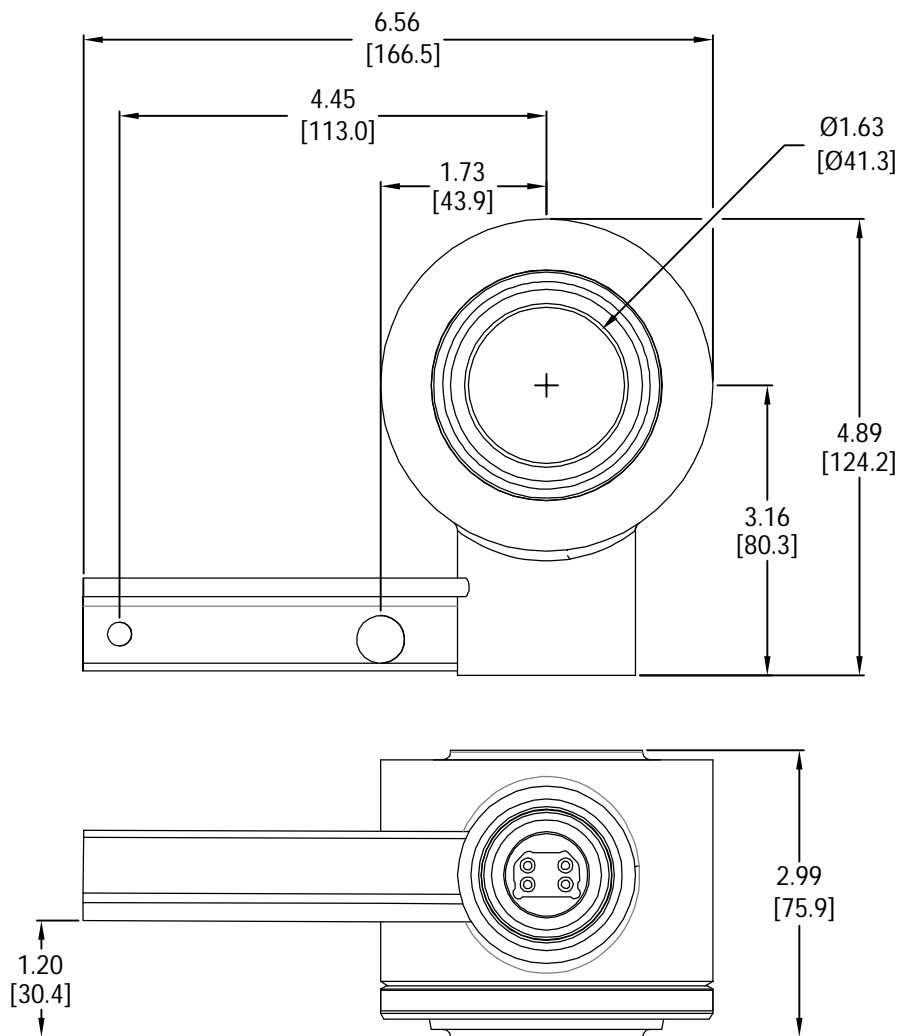
APPLICATIONS

- Pump off control systems.

OPTIONS

- Lightening protection.
- Spherical washer load introduction kit.

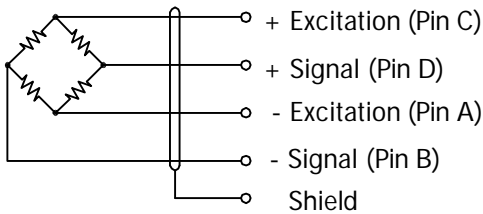
OUTLINE DIMENSIONS



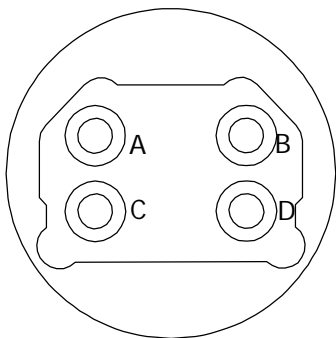
specialty sensors
SSRLC-SUCKER ROD LOAD CELL
8027



WIRING



Pin configuration :



Cable entry thread type : NPT-3/4
 Connector : Molex model 1261

SPECIFICATIONS

Model	8027		
Capacities	klb	30/ 50	
Full scale output(FS)	mV/V	2.01+0.03	
Combined error	%FS	≤±0.5	
Zero Balance	%FS	≤±1	
Temperature effect			
	Output	%LOAD/°F	≤±0.002
	Zero	%FS/°F	≤±0.002
Temperature range			
	Compensated	°F	0... +150
	Operating	°F	-40... +180
Terminal resistance			
	Input resistance	Ω	700±25
	Output resistance	Ω	700±5
Excitation voltage	VDC	15	
Insulation resistance@50VDC	MΩ	≥5000	
Static overload capacity	%FS	150	
Seal type	IP68		
Element material	Stainless steel		

PART NUMBERS

Capacity(klb)	Part #
30	8027-000-00
50	8027-001-01

Dimensions and specifications subject to change without notice

Group Four Transducers
 22 Deer Park Drive,
 E. Longmeadow, MA 01028
 www.groupfourtransducers.com

Phone : (800) 419 1444
 Fax : (413) 525 -6182
 sales@group-4.com